

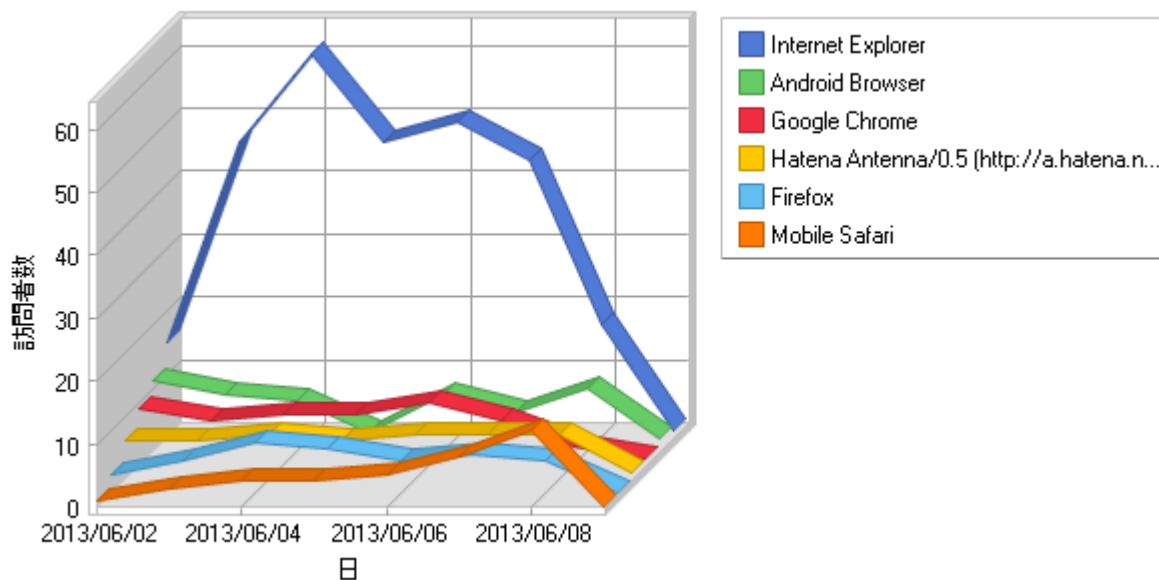


取得期間: 2013/06/02 03:23:07 - 2013/06/09 03:24:23

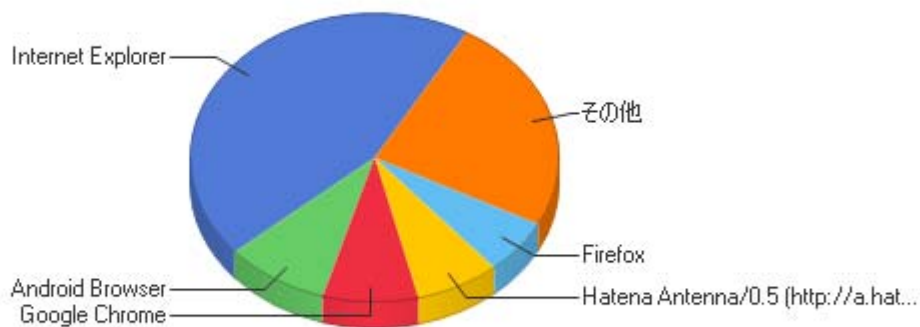
金 6月 14, 2013 - 11:42:30に生成

ブラウザ

使われたブラウザ(日別)



最も使われたブラウザ

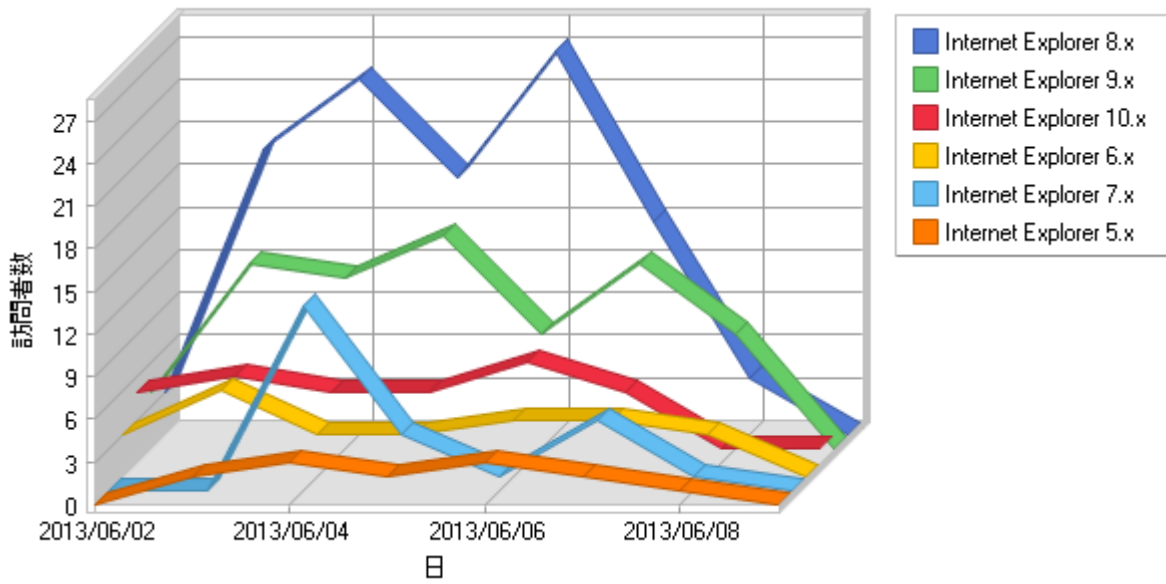


最も使われたブラウザ

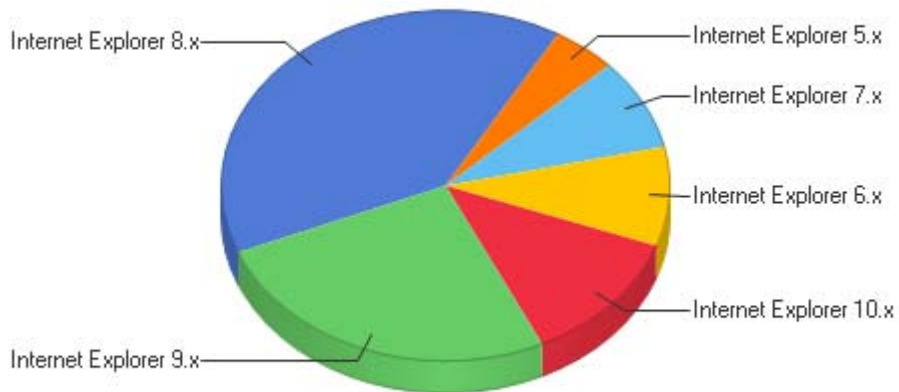
	ブラウザ	ヒット数	訪問者数	総訪問者数に対する割合(%)
1	Internet Explorer	2,893	283	44.64%
2	Android Browser	370	58	9.15%
3	Google Chrome	290	53	8.36%
4	Hatena Antenna/0.5 (http://a.hatena.ne.jp/help)	93	47	7.41%

5	Firefox	116	39	6.15%
6	Mobile Safari	201	37	5.84%
7	Safari	51	21	3.31%
8	Java/1.6.0_10	15	15	2.37%
9	Microsoft Office Protocol Discovery	7	7	1.10%
10	Wget	721	7	1.10%
11	Microsoft Office Existence Discovery	9	6	0.95%
12	その他	10	5	0.79%
13	PHP/class http 0.1	5	5	0.79%
14	Mozilla/4.0 (compatible;)	5	5	0.79%
15	Mozilla/4.0 (jig browser9i 1.5.0; SH03B; 1036)	12	4	0.63%
16	OpenWebIndex/Nutch-1.6	13	3	0.47%
17	AndroidDownloadManager	8	3	0.47%
18	Mozilla/4.0 (jig browser web; 1.0.4; P02B)	11	2	0.32%
19	Mozilla/5.0 (Unknown; Linux x86_64) AppleWebKit/534.34 (KHTML, like Gecko) PhantomJS/1.9.0 Safari/534.34	2	2	0.32%
20	Mozilla/5.0 (iPhone; CPU iPhone OS 6_1_3 like Mac OS X) AppleWebKit/536.26 (KHTML, like Gecko) CriOS/26.0.1410.53 Mobile/10B329 Safari/8536.25	5	2	0.32%
21	Mozilla/5.0 (iPhone; CPU iPhone OS 6_1_3 like Mac OS X) AppleWebKit/536.26 (KHTML, like Gecko) CriOS/27.0.1453.10 Mobile/10B329 Safari/8536.25	5	2	0.32%
22	Mozilla/5.0 (iPhone; CPU iPhone OS 6_1_4 like Mac OS X) AppleWebKit/536.26 (KHTML, like Gecko) CriOS/27.0.1453.10 Mobile/10B350 Safari/8536.25	5	2	0.32%
23	Gecko/17.0.1	6	2	0.32%
24	Microsoft-WebDAV-MiniRedir/6.0.6002	22	2	0.32%
25	Wing/2 (GM 1.3.5)	2	2	0.32%
26	Microsoft-WebDAV-MiniRedir/6.1.7601	25	2	0.32%
27	User-Agent: Mozilla/4.07 [ja_JP.EUC] (X11; I; MarkAgent FreeBSD 2.2.8-RELEASE i386; Nav)	1	1	0.16%
28	Mozilla/5.0 (iPhone; CPU iPhone OS 6_1_3 like Mac OS X) AppleWebKit/536.26 (KHTML, like Gecko) Mobile/10B329	1	1	0.16%
29	PEAR HTTP_Request class (http://pear.php.net/)	1	1	0.16%
30	H2C/1.0	1	1	0.16%
31	DoCoMo/2.0 N01A(c100;TB;W24H16)	1	1	0.16%
32	Netscape	1	1	0.16%
33	Microsoft-WebDAV-MiniRedir/6.0.6001	2	1	0.16%
34	IE/4.0	1	1	0.16%
35	DavClnt	1	1	0.16%
36	Microsoft Data Access Internet Publishing Provider Protocol Discovery	2	1	0.16%
37	LinkChecker/7.4 (+http://linkchecker.sourceforge.net/)	3	1	0.16%
38	Jakarta Commons-HttpClient/3.1	4	1	0.16%
39	Mozilla/5.0 (compatible; SemrushBot/0.96.2; +http://www.semrush.com/bot.html)	1	1	0.16%
40	Mozilla/5.0 (compatible; ndl-japan-warp/0.1 +http://warp.da.ndl.go.jp/)	205	1	0.16%
41	Mozilla/5.0 (iPhone; CPU iPhone OS 6_0_2 like Mac OS X) AppleWebKit/536.26 (KHTML, like Gecko) CriOS/27.0.1453.10 Mobile/10A551 Safari/8536.25	6	1	0.16%
42	Mozilla/5.0 (Macintosh; Intel Mac OS X 10_7_2) AppleWebKit/534.52.7 (KHTML, like Gecko)	2	1	0.16%
43	Mozilla/5.0 (PlayStation Vita 2.11) AppleWebKit/536.26 (KHTML, like Gecko) Silk/3.2	5	1	0.16%
44	Mozilla/5.0 (compatible; Robo/1.0b; http://potaru.com/robo.html)/Nutch-1.2	2	1	0.16%
	合計	5,142	634	100.00%

IEのバージョン(日別)



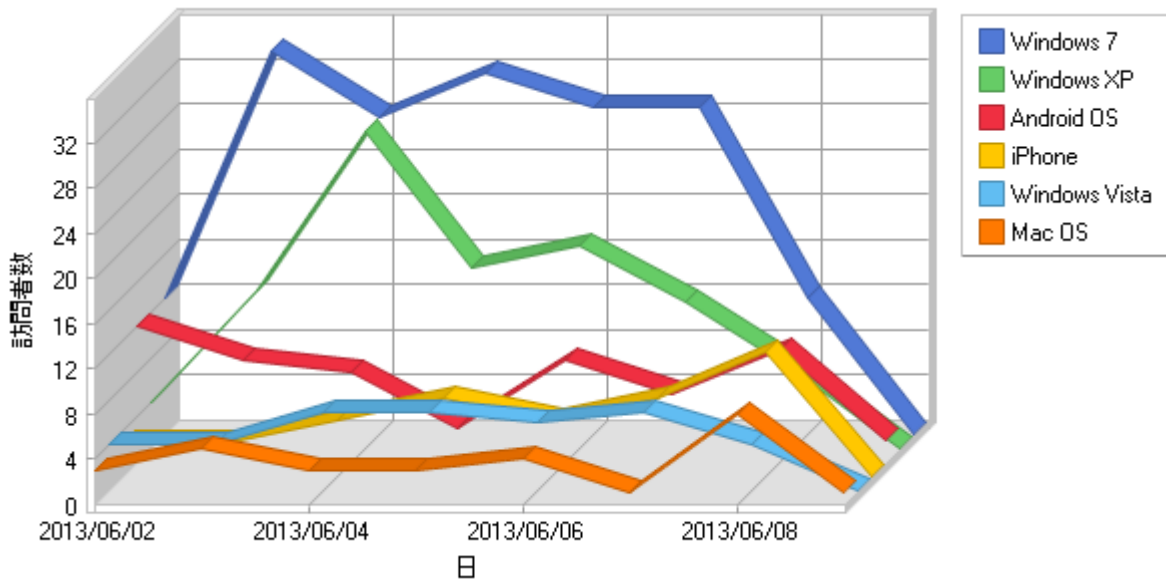
IEのバージョン



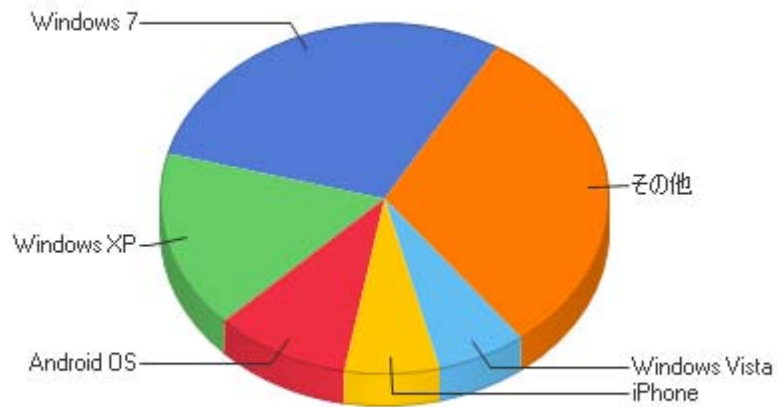
IEのバージョン

	ブラウザ	ヒット数	訪問者数	総訪問者数に対する割合 (%)
1	Internet Explorer 8.x	1,533	112	39.58%
2	Internet Explorer 9.x	444	73	25.80%
3	Internet Explorer 10.x	372	35	12.37%
4	Internet Explorer 6.x	188	26	9.19%
5	Internet Explorer 7.x	30	24	8.48%
6	Internet Explorer 5.x	326	13	4.59%
	合計	2,893	283	100.00%

使われたOS(日別)



最も使われたOS



最も使われたOS

	OS	ヒット数	訪問者数	総訪問者数に対する割合 (%)
1	Windows 7	1,628	176	29.14%
2	その他	1,217	114	18.87%
3	Windows XP	660	100	16.56%
4	Android OS	382	59	9.77%
5	iPhone	189	41	6.79%
6	Windows Vista	456	39	6.46%
7	Mac OS	71	28	4.64%
8	Windows 8	127	16	2.65%
9	Windows 2000	326	13	2.15%
10	Linux	49	11	1.82%
11	iPad	32	3	0.50%

12	FreeBSD	1	1	0.17%
13	iPod	2	1	0.17%
14	Windows ME	1	1	0.17%
15	Windows Server 2003	1	1	0.17%
	合計	5,142	604	100.00%